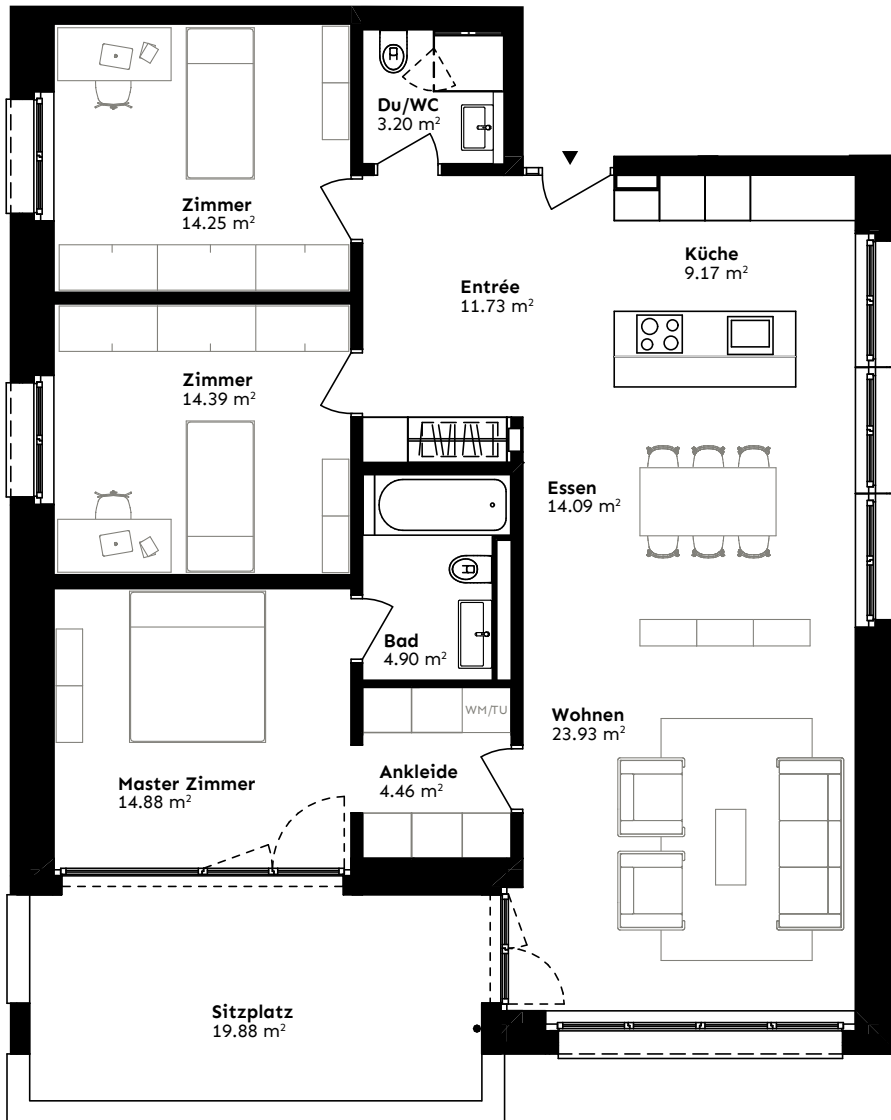


## D2.1, 4.5-Zimmer-Wohnung Uetikon am See



**Etage** Erdgeschoss

### Wohnfläche

Netto 115.00 m<sup>2</sup>

Brutto 119.56 m<sup>2</sup>

**Sitzplatz** 19.88 m<sup>2</sup>

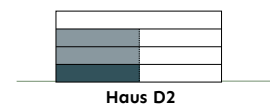
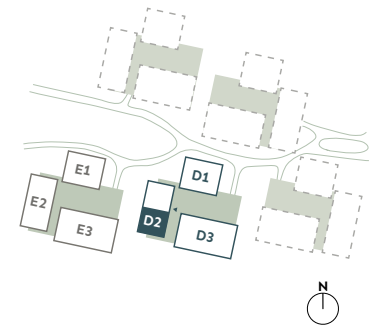
**Aussenfläche** 23.00 m<sup>2</sup>

**Keller/Waschküche** 12.88 m<sup>2</sup>

### Typengleiche Wohnungen

D2.3 D2.5

E2.1 E2.3 E2.5



0 5m 1:100