

D3.4, 5.5-Zimmer-Maisonettewohnung Uetikon am See

Etage Sockel / EG / 1.OG

Wohnfläche

Netto 175.05 m²

Brutto 185.41 m²

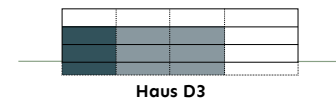
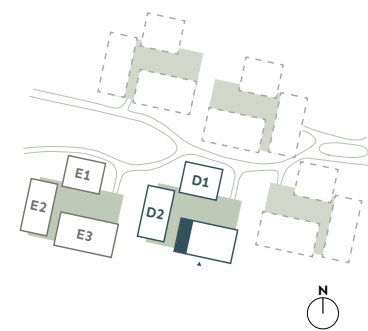
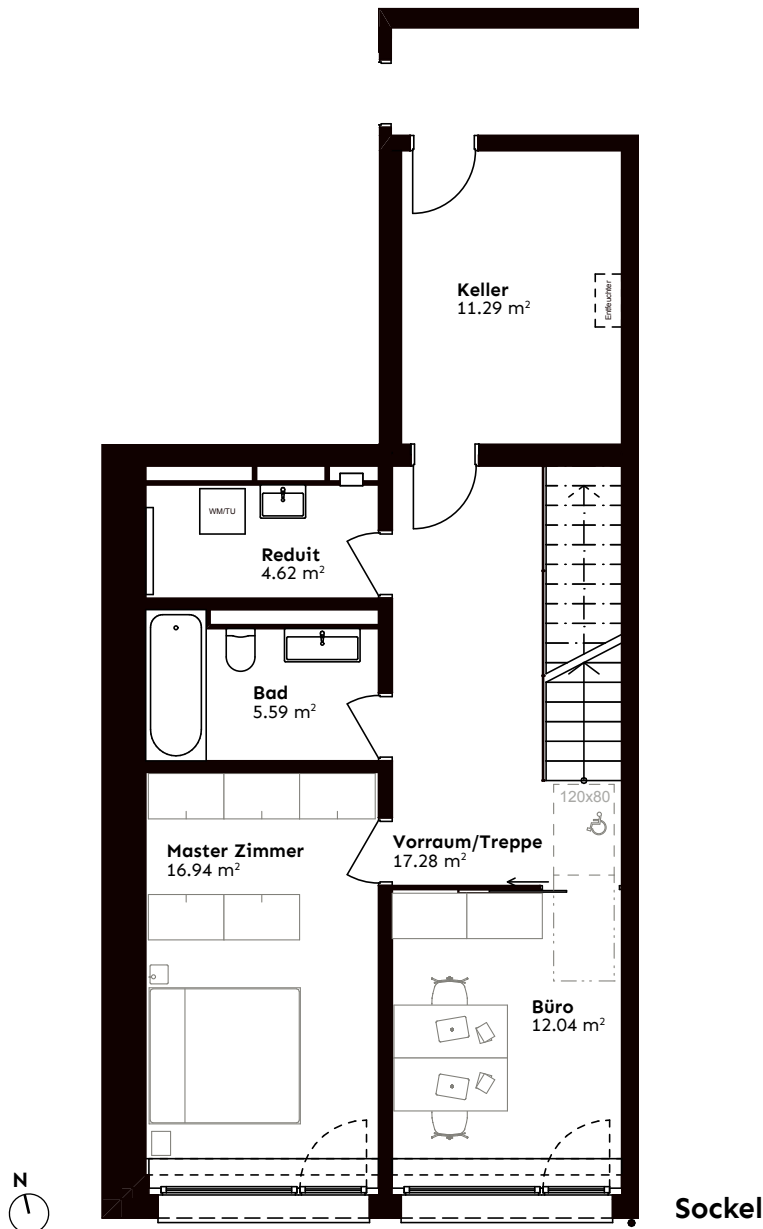
Loggia 17.01 m²

Aussenfläche 69.50 m²

Keller/Waschküche 11.29 m²

Typengleiche Wohnungen

D3.2 D3.3



D3.4, 5.5-Zimmer-Maisonettewohnung Uetikon am See

